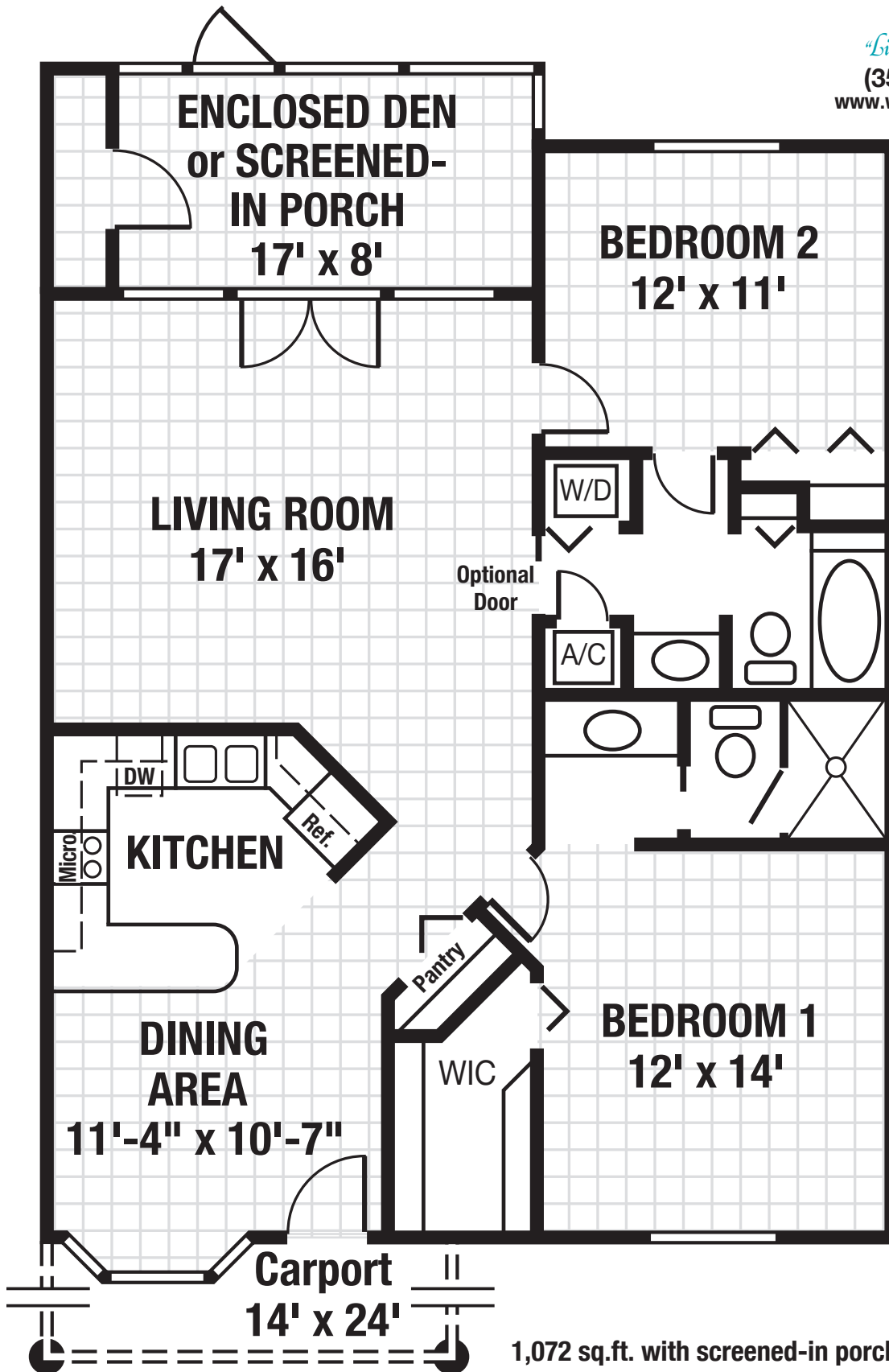


SABAL Villa

(Two Types)



(352) 385-1126
www.watermanvillage.com



1,072 sq.ft. with screened-in porch
1,208 sq.ft. with enclosed den

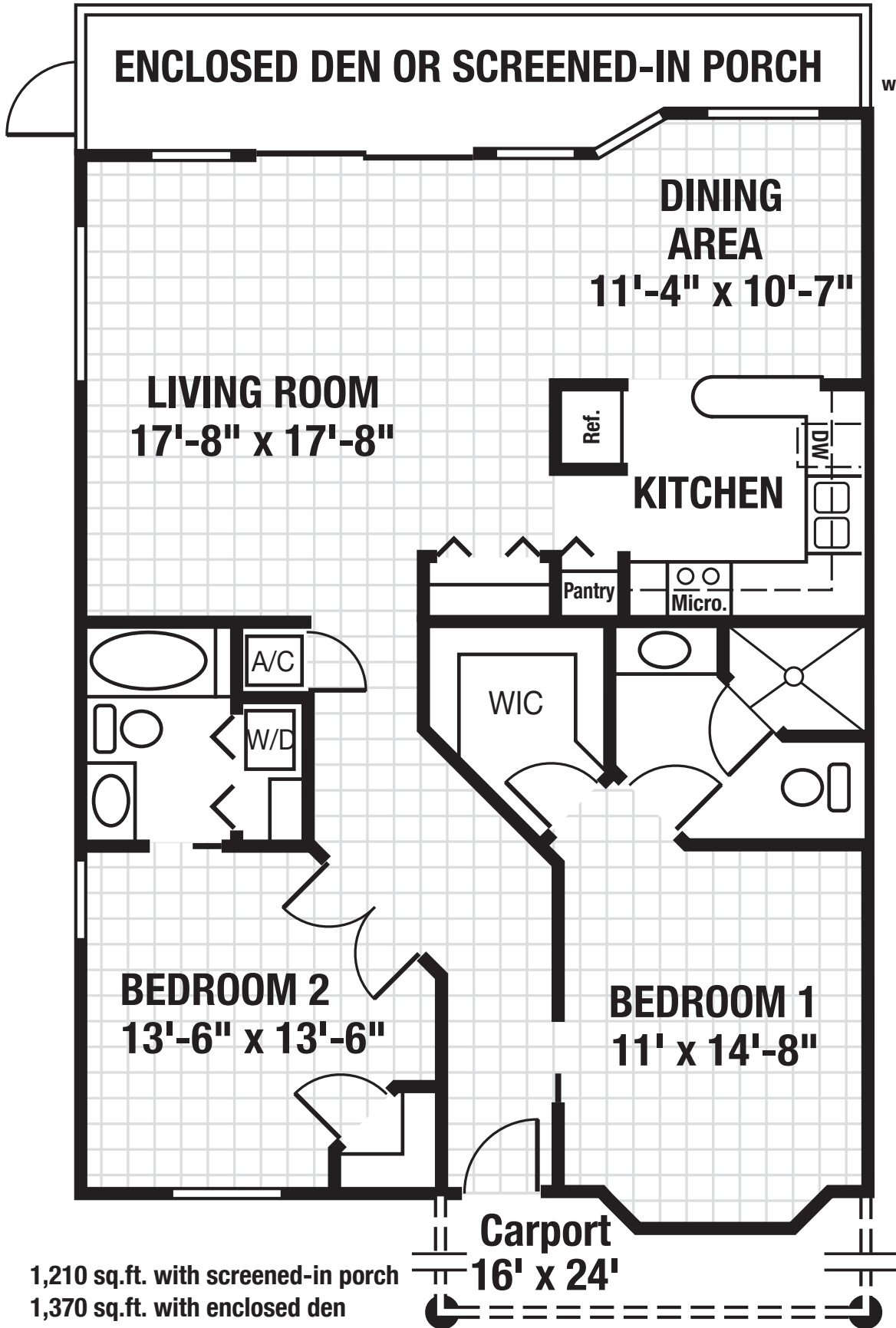
(All Dimensions are Approximate)

SANIBEL Villa

(Two Types)



"Living Your Best Life!"
(352) 385-1126
www.watermanvillage.com



1,210 sq.ft. with screened-in porch
1,370 sq.ft. with enclosed den

(All Dimensions are Approximate)